



Pipe and Cable Penetrations

Catalogue Overview
Sealing Solutions

Pipe Seal





Sealing Solution for Annular Spaces with Water Pressure

- Engineered for versatility in civil engineering, catering to power, gas, and water distribution sectors.
- Capable of sealing pipes and core-drilled openings of any diameter.
- Installation compatible with wall sleeves or directly into core-drilled holes.
- Utilizes screw nuts to compress metal plates against a rubber seal ring.
- Elastomer ring expands uniformly in all directions, ensuring a dependable seal around the pipeline.

Sealing element

- Single-layered, 30 mm (pressure-tight up to 3 bar)
- Double-layered, 60 mm (pressure-tight up to 5 bar)
- 40 mm – 80 mm, 30 mWS (3 bar) / 50 mWS (5 bar)

Product assets

- Elements made of stainless steel V2A/AISI 304, V4A/AISI 316Ti
- Tight against pressing water and gas (EPDM)
- Tight against aggressive mediums (NBR)
- For use in drinking water facilities (KTW-compliant)
- For use in sound protection in accordance with DIN 4109
- Bending of the carrier pipe possible up to 8°
- Custom-made special versions
- With large flange

All versions available for subsequent installation(split)

Quick-Fix Pipe Seal

Closed rubber seal insert in segmental construction

Features

- Single-layered, 20 mm (pressure level 1.5 bar)
- Double-layered, 40 mm (pressure level 3 bar)
- Elements made of stainless steel V2A/AISI 304
- Tight against pressing water and gas (EPDM)
- Subsequently separable on site



Pipe Seal Custom Configurations



Tailored Designs:

- **eccentric position of the carrier pipe**
- **additional fastening straps**
- **three-layered seal inserts**
- **equipped with test couplings and much more**

Sealing element

- Single-layered, 30 mm (pressure-tight up to 3 bar)
- Double-layered, 60 mm (pressure-tight up to 5 bar)

Product assets

- Elements made of stainless steel V2A/AISI 304, V4A/AISI 316Ti
- Tight against pressing water and gas (EPDM)
- Tight against aggressive mediums (NBR)
- For use in drinking water facilities (KTW-compliant)
- For use in sound protection in accordance with DIN 4109
- With locking/fastening straps
- Eccentric (closed and split)
- For special designs of the carrier pipe

Pipe Seal Bio Gas



Seal insert with fastening straps for container wall

DDL sealing systems for

- Pipes
- Cables
- Hatch windows
- Agitators

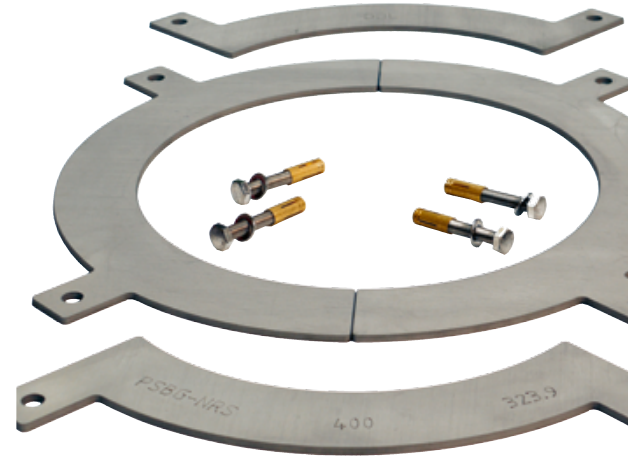
Material

- Pressure flange: steel V2A/AISI 304, V4A/AISI 316 Ti
- Seal inserts: EPDM
- Pressure-tight up to 50 mWS

Retrofitting Pipe Seal Bio Gas

Subsequent installation for modular seals or standard pipe seals

- Overlaying flange ring
- Split version
- With fastening straps





Hybrid Pipe Seal



Compact seal insert particularly suitable for thin-walled plastic pipes and plastic-covered pipes (district heating)

The extra soft seal insert adapts itself perfectly to the surface of the carrier pipe. High compressive or pressing forces are not necessary. A cold flow, which leads to cross-sectional tapering especially with polyethylene-(PE)-pipes, is nearly ruled out.

Special product characteristics

- Low screw torque
- Cross-section stability for PE-pipes
- No delayed re-tightening
- No special tools needed
- Fast, secure and easy installation

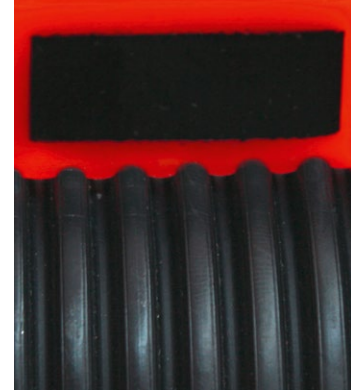
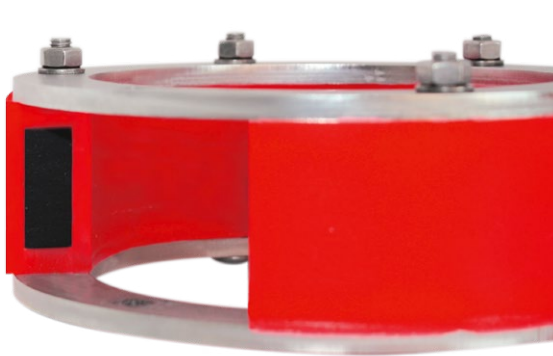
Features

- Closed
- Split
- With large flange/overlying flange
- For core-drilled holes DN 80 – DN 400
- Pressure-tight up to 3 bar, single-layered

Material

- Pressure flange and connecting elements made of stainless steel V2A/AISI 304
- Seal insert in 2-component construction made of thermo-set elastomer with excellent chemical, mechanical and thermal properties

Pipe Seal Advanced Materials Pipe Seal Senso



Particularly suitable for

- thin-walled plastic pipes
- plastic-covered pipes (district heating)
- corrugated/flexible pipes

The medium-density solid rubber core is designed to absorb and effectively redistribute compressive forces, while also facilitating the distribution of the medium. The outer soft layer serves as a sealing barrier against the carrier pipe, core-drilled openings, or wall sleeves, and extends to the edges of the pressure flange, covering the screw threads as well.

An additional layer of ultra-soft material ensures compatibility with even the most irregular surfaces of carrier pipes, allowing for seamless adaptation without issue.

Notably, the sealing component maintains its position securely within the annular gap, effectively resisting the ingress of water and gas, even under minimal screw connection torque. This is due to its excellent adherence to the carrier pipe's surface. Installation of the insert does not require any specialized tools (such as a torque wrench), and can be verified visually by checking for the presence of a red bulge at the flange's perimeter.

Special product characteristics

- 2-component construction
- Tight against pressing water (up to 1.5 bar)
- Excellent chemical, mechanical and thermal properties

Material

- Pressure flange and connecting elements made of stainless steel
- Carrier/core components made of solid rubber EPDM
- Cover made of soft thermoset elastomer





Pipe Seal ZWR with layered ring Inlays Layered ring EPDM



For on-site adaption to the outside diameter of the carrier pipe

Product assets

- Tight against pressing water and gas (EPDM)
- Steel elements V2A/AISI 304, V4A/AISI 316Ti
- Pressure-tight up to 1.5 bar
- Continuous layered ring inlays
- Universal applicability
- Also usable as blind plug
- For use in sound protection (DIN 4109)
- Low-cost storage
- Optionally with large flange

Features

- Sealing element single-layered, 30 mm
- Single-layered starting from DN 250, 40 mm

Dimensions

DN 100 *	single-layered 40 mm	20/25/30/35/40/45/50/55/60/64
DN 100 *	single-layered 30 mm	3 x 5/10/15/20/25/32
DN 100 *	single-layered 30 mm	4 x 5/10/15/20/25/32
DN 125	single-layered 30 mm	63/75-76/89-90
DN 125**	single-layered 30 mm	5 x 5/10/15/20/25/32
DN 150	single-layered 30 mm	63/75-76/89-90/110
DN 150**	single-layered 30 mm	4 x 5/10/15/20/25/32
DN 150**	single-layered 30 mm	8 x 5/10/15/20/25/32
DN 200	single-layered 30 mm	110/125/139-140/160
DN200**	single-layered 30 mm	12 x 5/10/15/20/25/32
DN250 *	single-layered 40 mm	2 x 20/25/30/35/40/45/50/55/60/64
DN250 *	single-layered 40 mm	3 x 20/25/30/35/40/45/50/55/60/64
DN300 *	single-layered 40 mm	4 x 20/25/30/35/40/45/50/55/60/64

Notches for occupation:

20/25/30/35/40/45/50/55/60/64

3 x 5/10/15/20/25/32

4 x 5/10/15/20/25/32

63/75-76/89-90

5 x 5/10/15/20/25/32

63/75-76/89-90/110

4 x 5/10/15/20/25/32

8 x 5/10/15/20/25/32

110/125/139-140/160

12 x 5/10/15/20/25/32

2 x 20/25/30/35/40/45/50/55/60/64

3 x 20/25/30/35/40/45/50/55/60/64

4 x 20/25/30/35/40/45/50/55/60/64

* optionally in split version ** split version



Pipe Seal Layered Ring PUR



CAVO

Features

- Sealing element single-layered, 30 mm
- Elements made of stainless steel V2A/AISI 304, V4A/AISI 316Ti
- Pressure-tight up to 1.5 bar
- Continuous layered ring inlays
- Universal applicability
- Also usable as blind plug
- For use in sound protection in accordance with DIN 4109
- Split and closed
- Layered ring plug made of PUR material



Dimensions

DN	Configuration	Cable outside diameter / notches for occupation:
DN 100	split	4 x 6 – 30 mm
DN 150	split	3 x 60 mm (notches 24-30-36-42-48-54) 6 x 40 mm (notches 14-18-22-26-30)
DN 150	closed	3 x 6 – 14 mm 2 x 6 – 18 mm 2 x 6 – 24 mm 1 x 6 – 36 mm 1 x 6 – 54 mm
DN 200	closed	4 x 6 – 18 mm 2 x 6 – 24 mm 2 x 6 – 36 mm 2 x 6 – 54 mm

Wall Collar KG



Secure hold with the Wall Collar KG

The wall collar offers an efficient and straightforward method for guiding pipes through openings in walls and foundation tiles. Should discrepancies in expansion coefficients between the wall and the carrier pipe create a gap, leading to water ingress through capillary action, the wall collar acts as an effective barrier to halt and prevent the water's passage.

Product assets

- Inside diameter with tight-fitting V-ribbed belt
- Sealing collar with interior reinforcement groove provides form stability and safety during the masonry
- Distinctive tread depth at the sealing collar provides a secure hold in the filling even under extreme installation conditions
- Elasticity of the wall collar allows installation on pipes made of different materials

Container Entry – BEF Snap-In

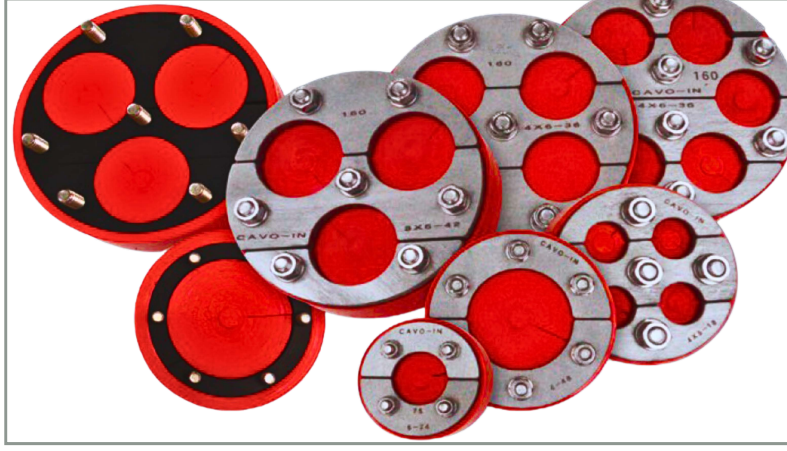


Elastic container entry, tight against pressing water

Fast and simple installation

- **No** welding
- **No** additional tightening elements
- **No** glueing
- Tight against pressing water up to 1 bar (10 mWS)
- Possible pipe alignment up to 30°
- Very good cohesive property
- Low level of hardness – high elasticity

Cable penetrations for corrugated tubes Segmental ring seal insert CAVO-IN



Seal insert for cable conduits and corrugated tubes with smooth or corrugated internal wall

The CAVO-IN series, designed specifically for pressure-sensitive, thin-walled corrugated cable conduits, leverages medium-hard EPDM inner components to effectively distribute the compressive forces exerted by stainless steel pressure flanges. This is achieved through the transmission of these forces to highly flexible segmental ring inserts internally and ultra-soft cover rings externally. The assembly of the seal inserts can be accurately monitored by visual inspection, ensuring a bulge formation that applies pressure gently yet effectively against the internal walls of the corrugated pipes.

Thanks to the innovative layered ring technology, these seal inserts offer on-site adaptability to various cable diameters by simply removing the required segmental rings. This feature, coupled with the unparalleled softness of the thermoset elastomer segmental rings, ensures any cable ovalities are seamlessly compensated for, maintaining integrity and performance. This adaptability and ease of installation make the CAVO-IN series an ideal solution for ensuring the durability and reliability of cable conduits, prominently positioning it for search engine optimization (SEO) in the field of electrical infrastructure solutions.

Special characteristics

- Two-component construction
- Inner molded part made of medium-hard EPDM elastomer
- Segmental ring insert made of extremely soft thermoset elastomer
- Flange pressure plates made of stainless steel V2A/AISI 304
- Screws made of stainless steel V2A/AISI 304
- Split version
- Pressure-tight up to 1 bar



CAVO-IN BV

Blind plug for cable conduits and corrugated tubes with smooth or corrugated internal wall

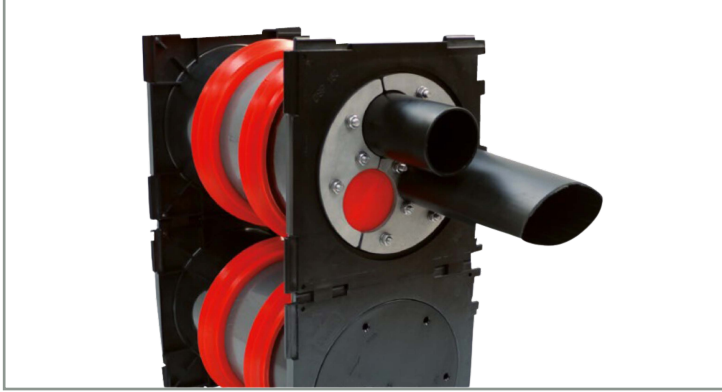
Due to the special combination and layout of materials, moderate pressures are exerted on the cable conduit and cable deformations can be prevented.

Special characteristics

- Two-component construction
- Core made of medium-hard EPDM elastomer
- Cover seal ring made of extremely soft thermoset elastomer
- Wing nut made of glass fiber reinforced polyamide with brass threaded bush
- Flange pressure plates made of stainless steel V2A/AISI 304
- Screws made of stainless steel V2A/AISI 304
- Pressure-tight up to 1 bar



System packings cable penetration DSP 150



**Please ask for our separate flyer.
Examples for seal inserts: DSP 150 seal packing**





PQZ wall sleeves made of asbestos-free polymer-quartz-sand cement

The grooved shape (water stop), the dimensioning and the dimensional tolerance of the wall sleeves accord with the works standard of one of the biggest German water suppliers.

Dimensions

- DN 80 to DN 1200
- Length 100 to 1000 mm
- Also available in split version

Features

- With creasing on the external wall (grooves) for additional protection against water penetration

Front wall sealing



Steel constructions according to DIN 18195 T9 made of stainless steel

for waterproofing buildings

Features

- Front flange (front wall sleeve)
- With loose/fixed flange
- Split and closed versions available
- Multiple penetrations available
- Stainless steel wall sleeve with loose/fixed flange
- Stainless steel wall sleeve with wall collar
- Pipe Seal with loose/fixed flange

"... we don't just meet expectations, we redefine what's possible in pipe sealing excellence!"

